



For Rebuilding Metal Surfaces Damaged by Erosion/Corrosion

Corrosion occurs when metal surfaces react with oxygen in the presence of water to form protective oxide films. These protective films are then removed by physical erosion such as the abrasive action of turbulent fluids.

This cycle of corrosion and erosion continually repeats itself, giving rise to the phenomenon of erosion/corrosion, which can be accelerated by:

- Impingement
- Entrainment
- Cavitation
- Bi-metallic corrosion

Erosion/corrosion produces rapid eating away of metal surfaces causing deterioration in performance/efficiency of machinery and equipment.

Belzona® 1311 was designed specifically for rebuilding all erosion/corrosion damage. For over 20 years it has proven to be the ideal material for this type of application with worldwide acceptance by such bodies as:

- Det Norske Veritas
- Bureau Veritas
- U.S. Department of Navy
- British Coal
- American Bureau of Shipping
- Caterpillar Inc.
- York International
- Italian Register of Shipping



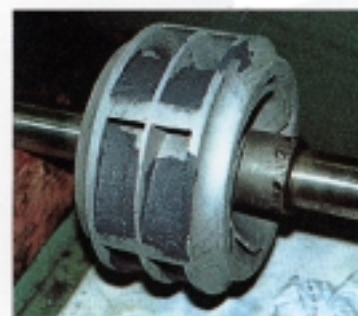
CENTRIFUGAL PUMPS



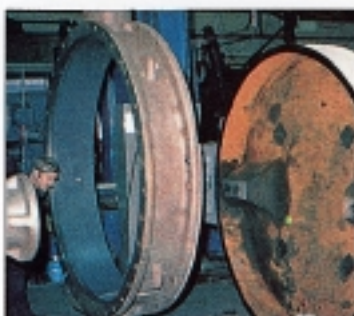
KORT NOZZLES



TAIL SHAFTS



IMPELLERS



VALVES



VACUUM PUMPS

The Unconventional Alternative.

Belzona Polymeric Ltd. Harrogate, HG1 4AY, England
Fax: +44 (0) 1423 505967 • Tel: +44 (0) 1423 567641
E-mail: Com@Belzona.co.uk

Belzona Inc. Miami, Florida 33172, USA
Fax: (305) 599-1140 • Tel: (305) 594-4994
E-mail: Belzona@Belzona.com

Printed from Belzona Electronic Library





BELZONA® 1000 SERIES METALLIC POLYMERS

Simplicity in Use

- No special tools or skills required. Easy application by spatula, specially designed applicator (included) or injection pistol.
- Simple and tolerant mixing ratio; mix just the right amount for the job.

Safety in Use

- Cold temperature cure ensures no fire risk.
- No shrinkage, expansion or distortion during cure, and no stress or strain on repaired components.
- Excellent electrical insulation characteristics enables use with complete safety on dissimilar metals where bi-metallic corrosion is a problem.

Versatility in Application

- Apply thin or thick sections in one operation. Will not slump at up to 1" (25 mm) sections. Stays where it is applied even on overhead surfaces.
- Bonds tenaciously to almost any surface including steel, aluminum, copper, brass, stainless steel, alumina and basalt.
- Moldable to accurate tolerances using simple formers.
- Machinable with polycrystalline diamond tipped tools.

Permanency in Service

- Does not corrode.
- Superb resistance to abrasion and erosion.
- Outstanding resistance to a broad range of chemicals including inorganic acids, alkalis, hydrocarbons, mineral oils, oxidizing agents, vegetables and fats, alcohols, aqueous solutions and emulsions.



AVAILABLE IN 2 KG. (4.4 LBS.) UNIT SIZE.



BS EN ISO 9002 - 1994
Certificate No. Q/09335

